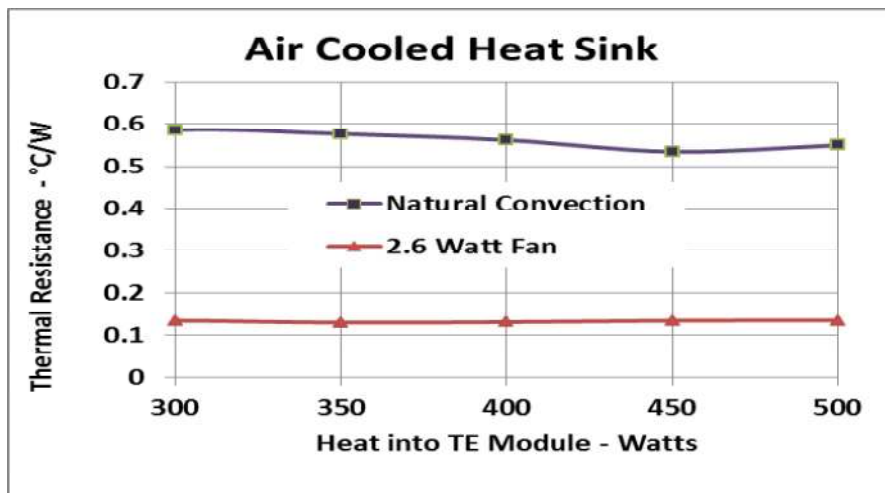
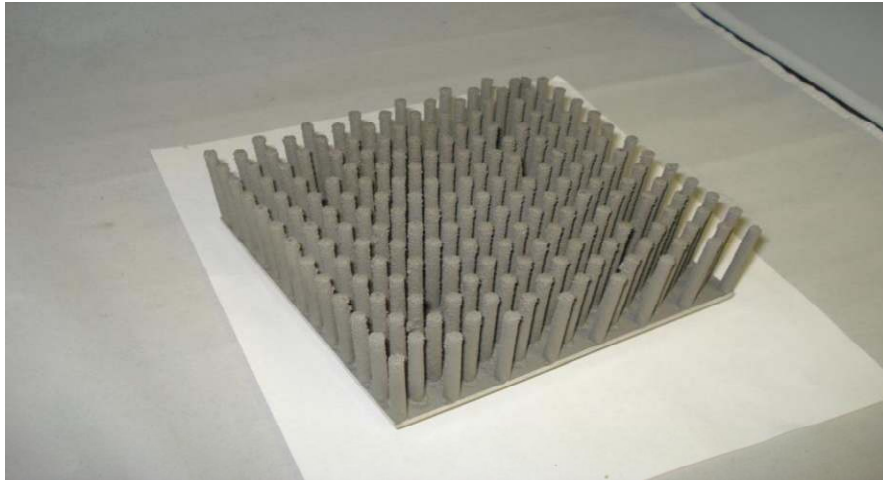




## Hi-Z Air Cooled Heat Sink



*Hi-Z's air cooled heat sink performance is exhibited above.*

*Measurements: 6 in. x 6 in. x 2 in.*

*Operates in both the natural convection and forced air modes. example is shown for a 2.6 Watt fan blowing air on the heat sink. The heat sink has coarse grain pins to enhance heat transfer.*